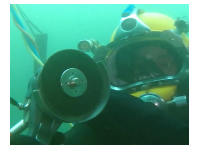


## Electric High Pressure Unit

42 LPM @ 210 bar

The electric HDE210\_42 high pressure unit is a very cost efficient, semi professional, high pressure unit with a 42 LPM flow, which means cleaning underwater surfaces fast with retro guns, surface rotors or ROV lances. The solid 4 wheeled cart requires a 18,5Kw three-phase power supply and is compatible with the CW350, double CW300's, SR450, SR600, all ROV lances and all underwater tools.



## Specifications

**Compatible with:** Double CW300's, CW350, CW202ROV, CW303ROV, SR450, SR600, All Underwater Tools

**Max. Pressure:** 210 bar (3,045 psi)

**Max. flow:** 42 LPM (11 GPM)

**Power:** 14,7Kw, 400v, 50Hz

**Weight:** 185kg (187lbs)

**Dimensions:** 100x75x85cm  
(39.4x29.5x33.5")

## Features

- Removes medium fouling, debris, corrosion and instable coatings
- Drives all underwater tools
- Heavy duty, 4 wheeled cart
- Stainless steel cover
- Big cartridge filter at pump inlet
- Manual pressure valve
- Motor thermal protection
- Hour counter
- Emergency stop
- Optional with frequency controller for continuous adjustment of pressure and flow.